

PlantVisorPRO Local

Supervision systems






Customisation guide

Integrated Control Solutions & Energy Savings

Contents

1. Key	5
2. Introduction	6
<hr/>	
Intended users of this guide.....	6
Accessing the system as a System Integrator	6
3. Customising the interface	7
<hr/>	
Cascading style sheets (CSS).....	7
Report layout.....	7
Screen background.....	8
Shell interface	8
Screen Saver	10
Login Page.....	11
Page header	11
Maps	12
Menu	12
Site calendar icons.....	13
Main device page.....	13
4. Pre-configurations	14
<hr/>	
Model configuration.....	14
Device parameter configuration	14
System control logic.....	14

1. KEY

	Note	Notes contain important information highlighted outside of the text they refer to.
	User access	Actions preceded by this symbol are possible with User access and can be carried out by the installer
	System Integrator access	Actions preceded by this symbol are only possible with System Integrator access and must be carried out by expert technicians

2. INTRODUCTION

Intended users of this guide

The purpose of this guide is to describe the options available in PlantVisorPRO for customising the interface. The guide distinguishes between operations that can be performed by Users and those that require access with the higher level System Integrator profile in Windows.

Accessing the system as a System Integrator

After starting PlantVisorPRO, the user accesses the operating system with read-only authorisation. To access the operating system with write authorisation, System Integrator access is required. The System Integrator password is unique for each PlantVisorPRO.

To obtain the System Integrator password

1. go to KSA and login
2. access the PlantVisorPRO / PlantVisorPRO2 / System Integrator access directory
3. enter the MAC address of the PlantVisor in question and request the access password

To access PlantVisorPRO with the System Integrator profile

1. start PlantVisorPRO with the keypad connected
2. in PVShell select Computer Settings. In the user name field type "Integrator" and enter the access password obtained from KSA

The user can now also write to the operating system directories.



When having finished, remember to close all the applications used (i.e. task manager, explorer etc.). Rebooting the system will also automatically restore user access.

3. CUSTOMISING THE INTERFACE

Cascading style sheets (CSS)



To customise the PlantVisorPRO style sheets, edit the following files:

1. Supervisor HTML interface – MS Internet Explorer browser:
C:\Carel\PlantVisorPRO\engine\webapps\PlantVisorPRO\stylesheet\PlantVisorIE.css
2. HTML virtual keyboard: keyboard.css

Report layout



To change the headers and footers on the log reports:

1. Download and install on a development PC (not PVPRO) the open-source tool called iReport (ver. 3.5.1 or higher):
<http://jasperforge.org/projects/ireport>
2. Transfer the files contained in the following directory from PVPRO to the PC:
C:\Carel\PlantVisorPRO\engine\webapps\PlantVisorPRO\WEB-INF\classes\template. Description of the files:
 - PDF_Alive.jrxml is the sign-of-life template (PDF)
 - PDF_AIEv.jrxml is the alarm/event PDF print template
 - PDF_Alarm.jrxml is the alarm PDF print template
 - H_Landscape1.jrxml is the data log report template
 - I_InstantReport0.jrxml and I_InstantReport1.jrxml are two instant report templates
3. Open the required .jrxml file in iReport to edit the contents
4. See the iReport guide for information on how to edit a template
5. Copy the edited templates from the PC to PVPRO - C:\Carel\PlantVisorPRO\engine\webapps\PlantVisorPRO\WEB-INF\classes\template directory - without changing the file names
6. Reboot the system to apply the changes



Only static images or texts should be edited, to avoid compromising the operation of the printouts and reports

Screen background

This image is visible when system is booting up and as the background when displaying the shell.



To edit the image:

1. create a new background in .bmp format measuring 1024x768 (stay below 1MB)
2. the new file name must be bootPRO.bmp
3. copy the new bootPRO.bmp file to C:\Windows (if necessary, overwrite the existing file).
4. reboot the system to make the changes visible

Shell interface

This image is used as the background in the shell window.





To edit the shell background image, proceed as follows:

1. create a new JPG image measuring 869x567 pixels
2. name the image bckgnd.jpg
3. save the new image to C:\Program Files\Carel\bin\images
4. reboot the system to make the changes visible

Screen Saver

This image is used as the screen saver that opens automatically after 3600 sec of no activity on the screen.



To edit the image:

1. create a new background in .jpg format measuring 527x92.
2. the new file must be named pvpro_brand.jpg
3. save the new image to C:/Documents and Settings\CAREL\My Documents\My Pictures and C:/Documents and Settings\PVPRO_User\My Documents\My Pictures
4. reboot the system to make the changes visible



It is recommended to keep file size as small as possible: loading 3D animated objects may reduce system performance.

Login Page

This image is used as the background on the PlantVisorPRO login page.

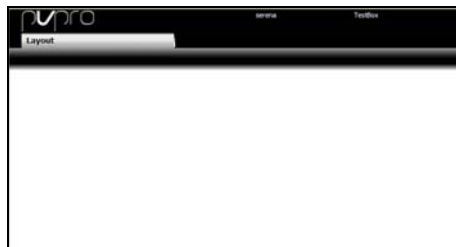


To edit the image:

1. create a new background in jpeg format measuring 569x381 px – size in bytes < 30 KB
2. load the image under Configuration / System pages / Customisation
3. logout to display the image

Page header

This image is placed at the top left of every page in PlantVisorPRO



To edit the image:

1. create a new background in png format measuring 118x35 px – size in bytes < 4 KB
2. load the image under Configuration / System pages / Customisation
3. logout and then login again to display the image

Maps




To enter customised layouts in PlantVisorPRO:

1. create the layout/layouts with PVPRO IDE - Layout Editor
2. import the layout/layouts from the following PlantVisorPRO page:
 - a. Configuration → System pages → Customisation TAB → Import layouts item



From version 3.1 of Layout Editor some areas customised with SDK can be included. For further information

see the corresponding manual ().

Menu



To define which menu items are visible for each user:

1. under Configuration / User configuration / Profiles select which items should be visible



To allow access to the supervisor pages only from a link on the layout without the standard PlantVisorPRO menu, under Configuration / User configuration / Profiles deselect Show menu



To edit the description of each menu item:

1. customise the descriptions under Configuration / Site configuration / Menu description



To edit the icons on the main menu:



1. create the new icons in png format measuring 58x74
2. save the new images under the C:\Carel\PlantVisorPRO\engine\webapps\PlantVisorPRO\images\menusx subdirectory, using the existing name
3. reboot the system to make the changes visible

Site calendar icons



To edit/add icons for the Site calendar categories:



1. create the new icons in png format measuring 28x28
2. save the new images under C:\Carel\PlantVisorPRO\engine\webapps\PlantVisorPRO\images\scheduler\symbols
3. reboot the system to make the changes visible

Main device page



To select which variables are visible on the main device page:

1. under Configuration / Site configuration in the line detail select the device to be configured from in the table
2. under Device configuration / Main variables select the variables to be made visible and the order these are displayed in



To edit the main page as desired, including custom images or tables, SDK is required. For further details see the corresponding manual.



To edit the image on the main page for all the devices belonging to the same model:

1. create a new device image in jpeg or png format measuring 150x150. e.g. "my_image.png"
2. open the C:\Carel\PlantVisorPRO\engine\webapps\PlantVisorPRO\images\devices\ directory and check the name of the standard image used. Example: "mpxpro.jpg"
3. Rename the new image, assigning it the same name as the default file, respecting upper/lower case and the extension. Example: "my_image.png" -> "mpxpro.jpg"
4. Overwrite the default file in the directory specified in point 2
5. Empty the browser cache

4. PRE-CONFIGURATIONS

Model configuration



To configure the devices belonging to a model in the same way as on other systems:

1. use the .DCFG file exported previously from Configuration / Site configuration / Copy configuration for same model of device
2. under Configuration / Site configuration / Copy configuration import the file from a USB pendrive, C:\\ftp directory or shared network directory
3. apply the configuration to all the selected devices belonging the same model

Device parameter configuration



To configure the parameters for a device in the same way as on other systems:

1. use the file saved previously from the device parameters page for devices belonging to the same model
2. on the device parameters page import the file from a USB pendrive, C:\\ftp directory or shared network directory



To enable the parameter configuration files for selection in the load to device parameters page control or visible in the Wizard quick parameter setting combo box:

1. use the .xxx file saved previously from the device parameters page for a device belonging to the same model
2. save the file under C:\\Care\\PlantVisorPRO\\DeviceSetting

System control logic



To enter custom system control logic, configuring the parameters for the field devices as other system variables change, use the Logic PRO function. For further details see the corresponding manual.

CAREL

CAREL INDUSTRIES S.r.l.

Via dell'Industria, 11 - 35020 Brugine - Padova (Italy)

Tel. (+39) 049.9716611 Fax (+39) 049.9716600

<http://www.carel.com> - e-mail: carel@carel.com

Agenzia / Agency: